

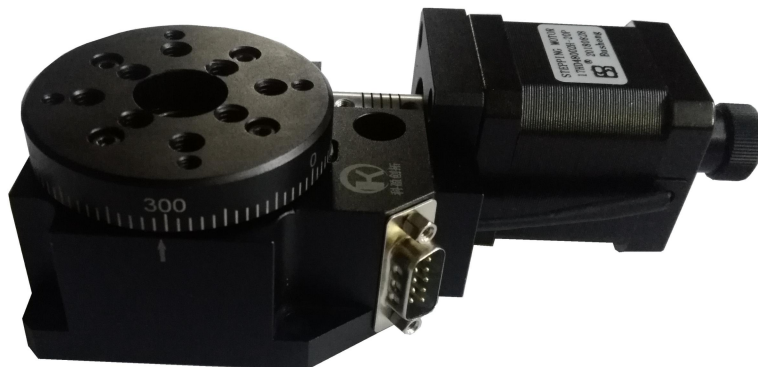
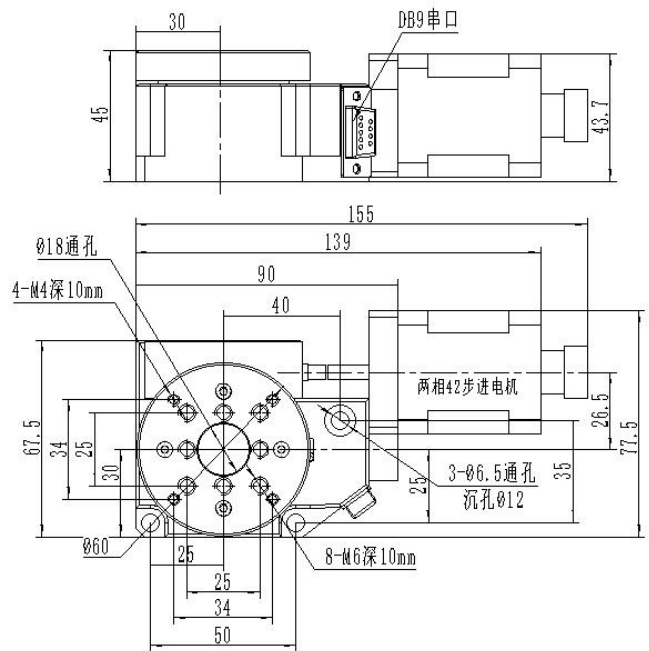
DXZ-Rotating module

Product characteristics:

- *42 stepper motors are equipped as standard, and the motion controller can realize automatic control
- *The special structural design ensures the extremely low end jump and eccentricity of the rotating table, making the rotating motion more stable
- *The central through hole of the rotary table has strict coaxiality requirements with the rotary center, which is convenient for customers to make precise positioning
- *The worm gear and worm structure with precise research and matching is adopted, which has comfortable movement, can rotate in any forward and reverse direction, and has very little empty return
- *The scale ring on the periphery of the table is a laser marking scale, which is convenient for initial positioning and reading
- *The motor and worm are connected by using high-quality elastic coupling, with synchronous transmission and good depolarization performance, greatly reducing eccentric disturbance and low noise
- *The rotary table can be used horizontally or vertically, and can be combined with other kinds of products to form a multi-dimensional electric adjustment table

Model and parameters

Parameter	Product model	KYCT160DXZ60H	
	Platform size	Φ 60mm	
	Rotation angle	360°	
	Material Science	aluminium alloy	
	surface treatment	Oxidation blackening	
	load bearing	25kg (Transfer bearing diameter Φ Within 120)	
	weight	1.3kg	
	transmission ratio	90 : 1	
	Driving mechanism	Worm gear and worm mechanism	
	Guide rail form	Bearing	
	electric machinery	Stepper motor (1.8°)	
	resolving power	0.02° (No subdivision)	
		0.001° = 3.6" (20subdivision)	
	Empty return	0.005° = 18"	
	eccentric	5μ	
	Lose step	0.005° = 18"	
	Parallelism	80μ	
	Maximum speed	50° /sec	
	positioning accuracy	0.005° = 18"	
Absolute positioning accuracy	0.01° = 36"		
Origin error	± 0.03°		



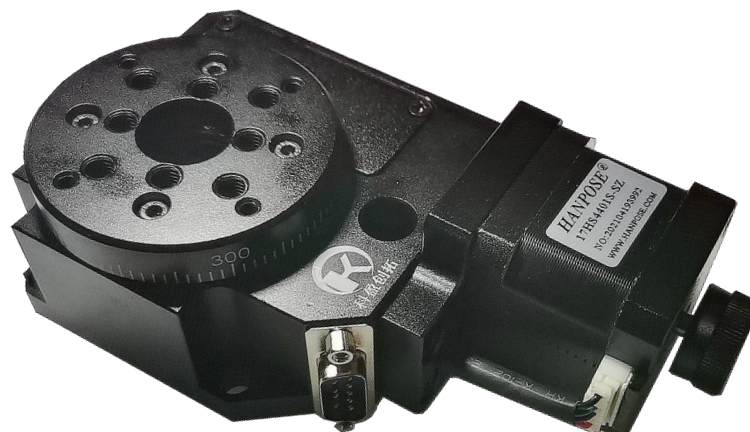
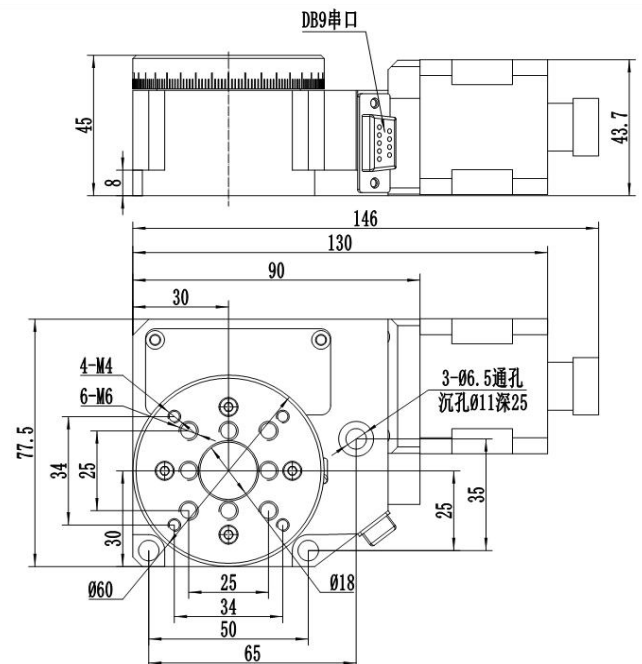
DXZ-Rotating module

Product characteristics:

- *42 stepper motors are equipped as standard, and the motion controller can realize automatic control
- *The special structural design ensures the extremely low end jump and eccentricity of the rotating table, making the rotating motion more stable
- *The central through hole of the rotary table has strict coaxiality requirements with the rotary center, which is convenient for customers to make precise positioning
- *The worm gear and worm structure with precise research and matching is adopted, which has comfortable movement, can rotate in any forward and reverse direction, and has very little empty return
- *The scale ring on the periphery of the table is a laser marking scale, which is convenient for initial positioning and reading
- *The motor and worm are connected by using high-quality elastic coupling, with synchronous transmission and good depolarization performance, greatly reducing eccentric disturbance and low noise
- *The rotary table can be used horizontally or vertically, and can be combined with other kinds of products to form a multi-dimensional electric adjustment table

Model and parameters

Product model	KYCT160DXZ60XH
Platform size	Φ 60mm
Rotation angle	360°
Material Science	aluminium alloy
surface treatment	Oxidation blackening
load bearing	25kg (Transfer bearing diameter Φ Within 120)
weight	1.3kg
transmission ratio	90 : 1
Driving mechanism	Worm gear and worm mechanism
Guide rail form	Bearing
electric machinery	Stepper motor (1.8°)
resolving power	0.02° (No subdivision)
	0.001° = 3.6" (20subdivision)
Empty return	0.005° = 18"
eccentric	5μ
Lose step	0.005° = 18"
Parallelism	80μ
Maximum speed	50° /sec
positioning accuracy	0.005° = 18"
Absolute positioning accuracy	0.01° = 36"
Origin error	± 0.03°





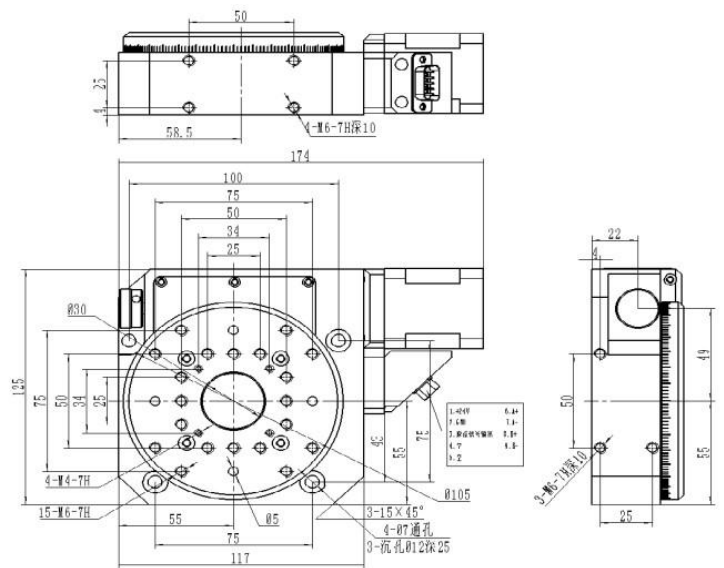
DXZ-Rotating module

Product characteristics:

- *42 stepper motors are equipped as standard, and the motion controller can realize automatic control
- *The special structural design ensures the extremely low end jump and eccentricity of the rotating table, making the rotating motion more stable
- *The central through hole of the rotary table has strict coaxiality requirements with the rotary center, which is convenient for customers to make precise positioning
- *The worm gear and worm structure with precise research and matching is adopted, which has comfortable movement, can rotate in any forward and reverse direction, and has very little empty return
- *The scale ring on the periphery of the table is a laser marking scale, which is convenient for initial positioning and reading
- *The motor and worm are connected by using high-quality elastic coupling, with synchronous transmission and good depolarization performance, greatly reducing eccentric disturbance and low noise
- *The rotary table can be used horizontally or vertically, and can be combined with other kinds of products to form a multi-dimensional electric adjustment table

Model and parameters

参数说明	Product model	KYCT110DXZ100H	
	Platform size	Φ 105mm	
	Rotation angle	360°	
	Material Science	aluminium alloy	
	surface treatment	Oxidation blackening	
	load bearing	35kg (Transfer bearing diameter Φ Within 210)	
	weight	3kg	
	transmission ratio	90 : 1	
	Driving mechanism	Worm gear and worm mechanism	
	Guide rail form	Bearing	
	electric machinery	Stepper motor (1.8°)	
	resolving power	0.02° (No subdivision)	
		0.001° = 3.6" (20subdivision)	
	Empty return	0.005° = 18"	
	eccentric	5μ	
	Lose step	0.005° = 18"	
	Parallelism	80μ	
Maximum speed	50° /sec		
positioning accuracy	0.005° = 18"		
Absolute positioning	0.01° = 36"		
Origin error	± 0.03°		



DXZ-Rotating module

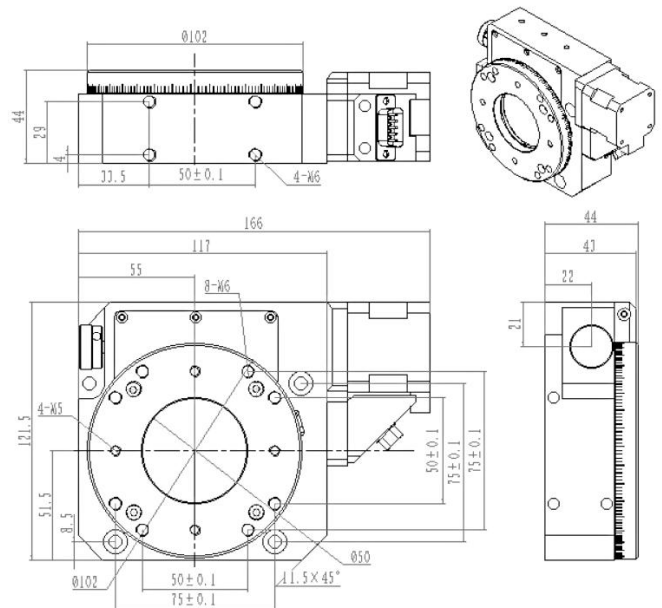
Product characteristics:

- *42 stepper motors are equipped as standard, and the motion controller can realize automatic control
- *The special structural design ensures the extremely low end jump and eccentricity of the rotating table, making the rotating motion more stable
- *The central through hole of the rotary table has strict coaxiality requirements with the rotary center, which is convenient for customers to make precise positioning
- *The worm gear and worm structure with precise research and matching is adopted, which has comfortable movement, can rotate in any forward and reverse direction, and has very little empty return
- *The scale ring on the periphery of the table is a laser marking scale, which is convenient for initial positioning and reading
- *The motor and worm are connected by using high-quality elastic coupling, with synchronous transmission and good depolarization performance, greatly reducing eccentric disturbance and low noise
- *The rotary table can be used horizontally or vertically, and can be combined with other kinds of products to form a multi-dimensional electric adjustment table

Model and parameters

Product model	KYCT110DXZ105H
Platform size	Φ105mm
Rotation angle	360°
Material Science	aluminium alloy
surface treatment	Oxidation blackening
load bearing	35kg (Transfer bearing diameter Φ within 210)
weight	3kg
transmission ratio	90 : 1
Driving mechanism	Worm gear and worm mechanism
Guide rail form	Bearing
electric machinery	Stepper motor (1.8°)
resolving power	0.02° (No subdivision)
	0.001° = 3.6" (20subdivision)
Empty return	0.005° = 18"
eccentric	5μ
Lose step	0.005° = 18"
Parallelism	80μ
Maximum speed	50° /sec
positioning accuracy	0.005° = 18"
Absolute positioning	0.01° = 36"
Origin error	± 0.03°

参数说明





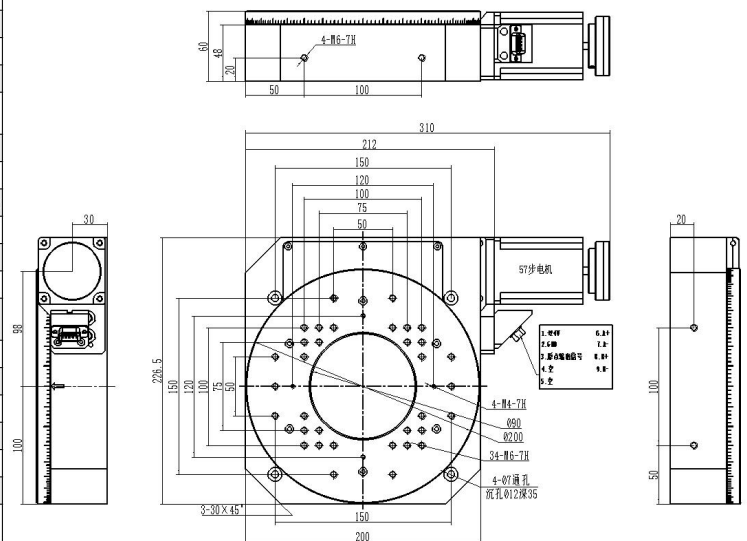
DXZ-Rotating module

Product characteristics:

- *57 stepper motors are equipped as standard, and the motion controller can realize automatic control
- *The special structural design ensures the extremely low end jump and eccentricity of the rotating table, making the rotating motion more stable
- *The central through hole of the rotary table has strict coaxiality requirements with the rotary center, which is convenient for customers to make precise positioning
- *The worm gear and worm structure with precise research and matching is adopted, which has comfortable movement, can rotate in any forward and reverse direction, and has very little empty return
- *The scale ring on the periphery of the table is a laser marking scale, which is convenient for initial positioning and reading
- *The motor and worm are connected by using high-quality elastic coupling, with synchronous transmission and good depolarization performance, greatly reducing eccentric disturbance and low noise
- *The rotary table can be used horizontally or vertically, and can be combined with other kinds of products to form a multi-dimensional electric adjustment table

Model and parameters

Product model	KYCT110DXZ200H
Platform size	Φ 200mm
Rotation angle	360°
Material Science	aluminium alloy
surface treatment	Oxidation blackening
load bearing	55kg (Transfer bearing diameter Φ Within 400)
weight	8.5kg
transmission ratio	180:1
Driving mechanism	Worm gear and worm mechanism
Guide rail form	Bearing
electric machinery	Stepper motor (1.8°)
resolving power	0.02° (No subdivision)
	0.001° = 3.6" (20subdivision)
Empty return	0.005° = 18"
eccentric	5μ
Lose step	0.005° = 18"
Parallelism	80μ
Maximum speed	25° /sec
positioning accuracy	0.005° = 18"
Absolute positioning accuracy	0.01° = 36"
Origin error	± 0.03°



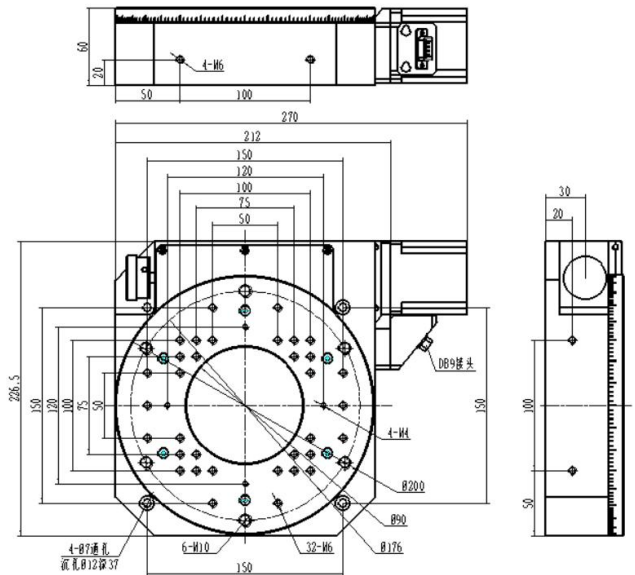
DXZ-Rotating module

Product characteristics:

- *57 stepper motors are equipped as standard, and the motion controller can realize automatic control
- *The special structural design ensures the extremely low end jump and eccentricity of the rotating table, making the rotating motion more stable
- *The central through hole of the rotary table has strict coaxiality requirements with the rotary center, which is convenient for customers to make precise positioning
- *The worm gear and worm structure with precise research and matching is adopted, which has comfortable movement, can rotate in any forward and reverse direction, and has very little empty return
- *The scale ring on the periphery of the table is a laser marking scale, which is convenient for initial positioning and reading
- *The motor and worm are connected by using high-quality elastic coupling, with synchronous transmission and good depolarization performance, greatly reducing eccentric disturbance and low noise
- *The rotary table can be used horizontally or vertically, and can be combined with other kinds of products to form a multi-dimensional electric adjustment table

Model and parameters

p a r a m e t e r	Product model	KYCT110DXZ200GH
	Platform size	Φ 200mm
	Rotation angle	360°
	Material Science	aluminium alloy
	surface treatment	Oxidation blackening
	load bearing	55kg (Transfer bearing diameter Φ Within 400)
	weight	8.5kg
	transmission ratio	180 : 1/90: 1
	Driving mechanism	Worm gear and worm mechanism
	Guide rail form	Bearing
	electric machinery	Stepper motor (1.8°)
	resolving power	0.02° (No subdivision) 0.001° =3.6" (20subdivision)
	Empty return	0.005° =18"
	eccentric	5μ
	Lose step	0.005° =18"
	Parallelism	80μ
	Maximum speed	25° /sec
positioning accuracy	0.005° =18"	
Absolute positioning accuracy	0.01° =36"	
Origin error	± 0.03°	



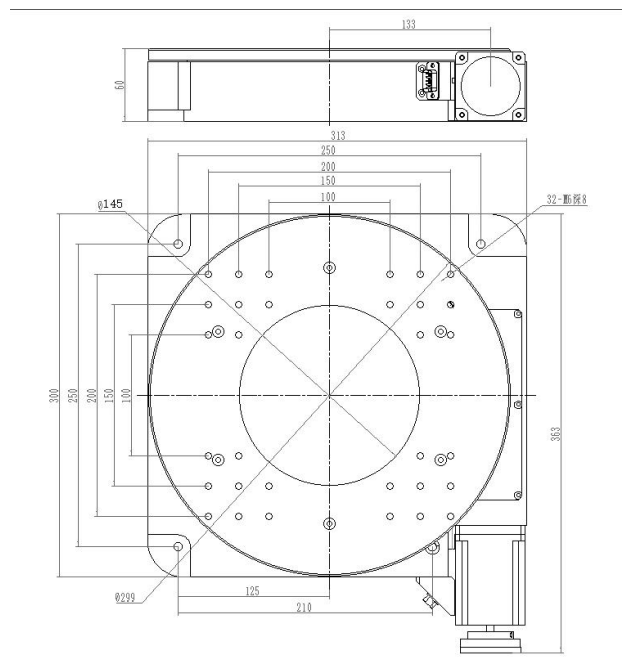
DXZ-Rotating module

Product characteristics:

- *57 stepper motors are equipped as standard, and the motion controller can realize automatic control
- *The special structural design ensures the extremely low end jump and eccentricity of the rotating table, making the rotating motion more stable
- *The central through hole of the rotary table has strict coaxiality requirements with the rotary center, which is convenient for customers to make precise positioning
- *The worm gear and worm structure with precise research and matching is adopted, which has comfortable movement, can rotate in any forward and reverse direction, and has very little empty return
- *The scale ring on the periphery of the table is a laser marking scale, which is convenient for initial positioning and reading
- *The motor and worm are connected by using high-quality elastic coupling, with synchronous transmission and good depolarization performance, greatly reducing eccentric disturbance and low noise
- *The rotary table can be used horizontally or vertically, and can be combined with other kinds of products to form a multi-dimensional electric adjustment table

Model and parameters

p a r a m e t e r	Product model	KYCT110DXZ300H	
	Platform size	Φ 300mm	
	Rotation angle	360°	
	Material Science	aluminium alloy	
	surface treatment	Oxidation blackening	
	load bearing	85kg (Transfer bearing diameter Φ Within 600)	
	weight	10.5kg	
	transmission ratio	250 : 1	
	Driving mechanism	Worm gear and worm mechanism	
	Guide rail form	Bearing	
	electric machinery	Stepper motor (1.8°)	
	resolving power	0.02° (No subdivision)	
		0.001° = 3.6" (20subdivision)	
	Empty return	0.005° = 18"	
	eccentric	5μ	
	Lose step	0.005° = 18"	
	Parallelism	80μ	
	Maximum speed	15° /sec	
	positioning accuracy	0.005° = 18"	
Absolute positioning accuracy	0.01° = 36"		
Origin error	± 0.03°		





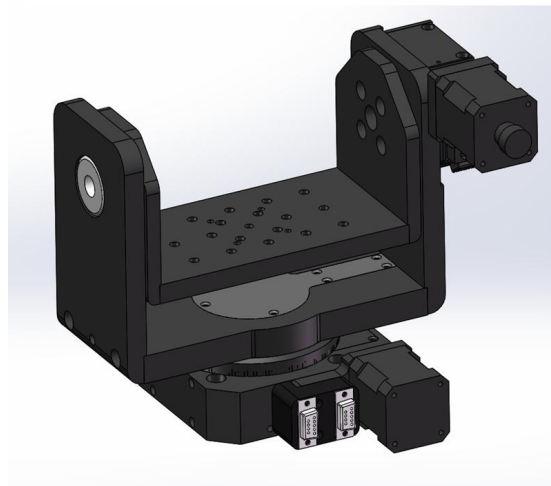
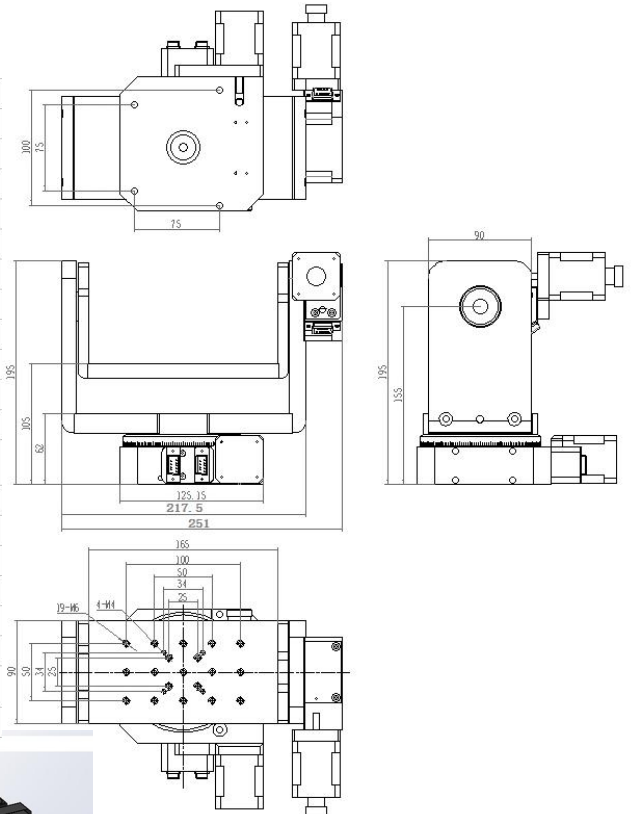
DXZ-Rotating module

Product characteristics:

- *Precision 42 stepping motor is equipped as standard, and the motion controller can realize automatic control of its two axes
- *The central through hole of the rotary table has strict coaxiality requirements with the rotary center, which is convenient for customers to make precise positioning
- *The worm gear and worm structure with precise research and matching is adopted, which has comfortable movement, can rotate in any forward and reverse direction, and has very little empty return
- *The table top is marked with standard fixed threads to facilitate customers to install relevant accessories by themselves
- *The two-dimensional rotary table can carry out two-axis linkage horizontally and form two-dimensional precise adjustment with its optical products
- *The initial zero position is equipped as standard, and the error generated in long-term use can be zeroed and eliminated

Model and parameters

Product model	KYCT110X160D2XZ360M
Platform size	90X165mm
Rotation angle	360°
Material Science	aluminium alloy
surface treatment	Oxidation blackening
load bearing	10kg
weight	6.5kg
transmission ratio	90 : 1
Driving mechanism	Worm gear and worm mechanism
Guide rail form	Bearing
electric machinery	Stepper motor (1.8°)
resolving power	0.02° (No subdivision)
	0.001° =3.6" (20subdivision)
Empty return	0.005° =18"
eccentric	5μ
Lose step	0.005° =18"
Parallelism	80μ
Maximum speed	25° /sec*40° /sec
positioning accuracy	0.005° =18"
Absolute positioning accuracy	0.01° =36"
Origin error	±0.05°





DXZ-Rotating module

Product characteristics:

- *Precision 57 stepping motor is equipped as standard, and the motion controller can realize automatic control of its two axes
- *The central through hole of the rotary table has strict coaxiality requirements with the rotary center, which is convenient for customers to make precise positioning
- *The worm gear and worm structure with precise research and matching is adopted, which has comfortable movement, can rotate in any forward and reverse direction, and has very little empty return
- *The table top is marked with standard fixed threads to facilitate customers to install relevant accessories by themselves
- *The two-dimensional rotary table can carry out two-axis linkage horizontally and form two-dimensional precise adjustment with its optical products
- *The initial zero position is equipped as standard, and the error generated in long-term use can be zeroed and eliminated

Model and parameters

Product model	KYCT120X110D2XZ360M
Platform size	200X299mm
Rotation angle	360°
Material Science	aluminium alloy
surface treatment	Oxidation blackening
load bearing	15kg
weight	12.5kg
transmission ratio	180: 1*90 : 1
Driving mechanism	Worm gear and worm mechanism
Guide rail form	Bearing
electric machinery	Stepper motor (1.8°)
resolving power	0.02° (No subdivision)
	0.001° =3.6" (20subdivision)
Empty return	0.005° =18"
eccentric	5μ
Lose step	0.005° =18"
Parallelism	80μ
Maximum speed	25° /sec*40° /sec
positioning accuracy	0.005° =18"
Absolute positioning accuracy	0.01° =36"
Origin error	±0.03°

