

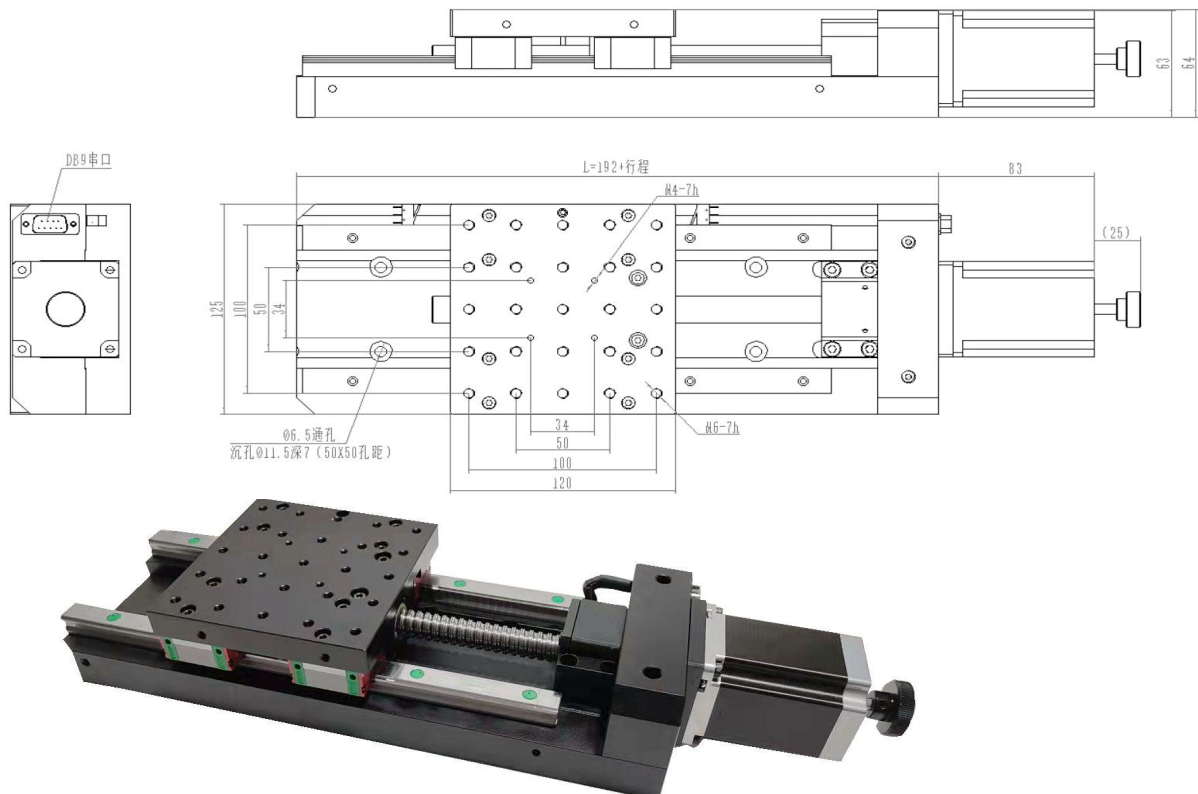
# DPY-Linear module

## Product characteristics:

- \*Stepper motor is equipped as standard, and the motion controller can realize automatic control
- \*Precision ball screw drive, the repeated positioning accuracy and absolute positioning accuracy are kept within 5um, and the service life is long
- \*The fixed way of fine grinding guide rail greatly reduces the pitch and yaw of the electric moving table, and greatly improves the straightness and parallelism of motion
- \*The base has threaded holes and through holes with standard hole spacing, which is convenient for installation and fixation
- \*The stepping motor is directly connected with the screw, which has good depolarization performance, greatly reduces the eccentric disturbance and has low noise

## Model and parameters

Product model	KYCT125DPY50M-G	KYCT125DPY50M-G	KYCT125DPY50M-G	KYCT125DPY50M-G	KYCT125DPY50M-G	KYCT125DPY50M-G	KYCT125DPY50M-G
trip	50mm	100mm	150mm	200mm	300mm	400mm	500mm
Platform size	120X125	120X125	120X125	120X125	120X125	120X125	120X125
Screw specification	High precision ball screw(Lead5)						
guide	高精密线性滑块导轨(方导轨)						
Stepper motor(1.80)	57Stepper motor						
Main material	Aluminum alloy / steel						
surface treatment	Anodizing blackening						
load bearing	25Kg		35Kg		45Kg		
weight	3.5Kg	4.2Kg	4.8Kg	5.5Kg	6.5Kg	7.5Kg	8.5Kg
Maximum speed	40mm/sec						
Repetition accuracy	2U						
Absolute accuracy	5U		8U		12U		
Straightness	3U		5U		6U		
Parallelism	15U			25U			
Replaceable servo motor							



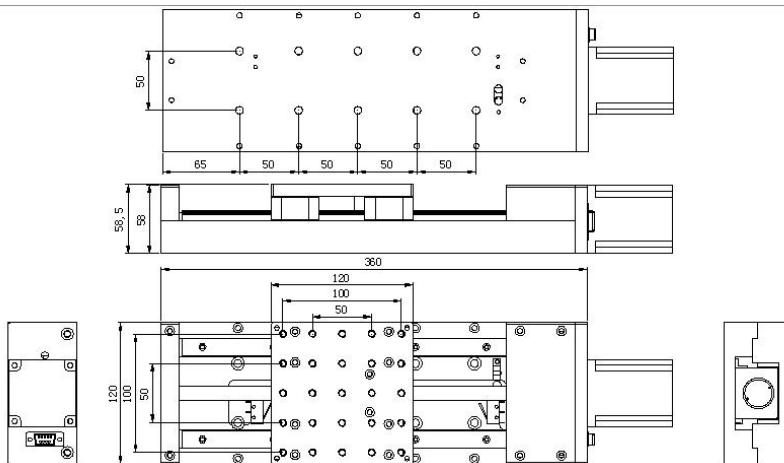
# DPY-Linear module

## Product characteristics:

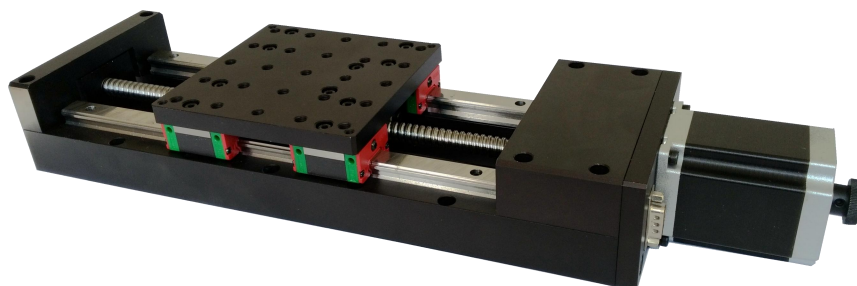
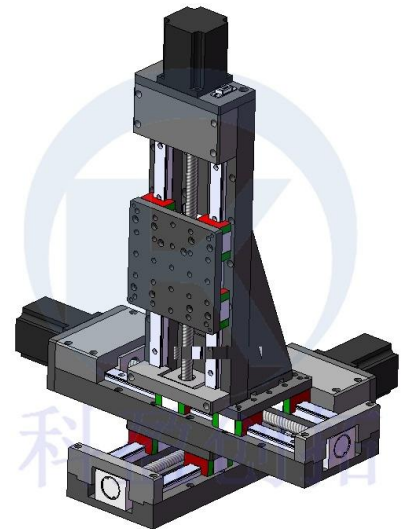
- \*Stepper motor is equipped as standard, and the motion controller can realize automatic control
- \*Precision ball screw drive, the repeated positioning accuracy and absolute positioning accuracy are kept within 5um, and the service life is long
- \*The fixed way of fine grinding guide rail greatly reduces the pitch and yaw of the electric moving table, and greatly improves the straightness and parallelism of motion
- \*The base has threaded holes and through holes with standard hole spacing, which is convenient for installation and fixation
- \*The stepping motor is directly connected with the screw, which has good depolarization performance, greatly reduces the eccentric disturbance and has low noise

## Model and parameters

产品型号	KYCT120DPY50M-G	KYCT120DPY100M-G	KYCT120DPY150M-G	KYCT120DPY200M-G	KYCT120DPY300M-G	KYCT120DPY400M-G	KYCT120DPY500M-G	
P a r a m e t e r	trip	50mm	100mm	150mm	200mm	300mm	500mm	
	Platform size	120X120	120X120	120X120	120X120	120X120	120X120	
	Screw specification	High precision ball screw(Lead4mm)						
	guide	High precision linear slide guide (square guide)						
	Stepper motor (1.80)	57Stepper motor						
	Main material	Aluminum alloy / steel						
	surface treatment	Anodizing blackening						
	load bearing	15Kg		25Kg		35Kg		45Kg
	weight	2.5Kg	3.2Kg	3.8Kg	4.5Kg	5.2Kg	6.0Kg	6.8Kg
	Maximum speed	40mm/sec						
	Repetition accuracy	2U						
Absolute accuracy	5U		8U		12U			
Straightness	3U		5U		6U			
Parallelism	15U					25U		
Replaceable servo motor								



型号	LY120DPY50M-G	LY120DPY100M-G	LY120DPY150M-G	LY120DPY200M-G	LY120DPY300M-G	LY120DPY400M-G	LY120DPY500M-G
行程	50mm	100mm	150mm	200mm	300mm	400mm	500mm
L	260mm	310mm	360mm	410mm	510mm	610mm	710mm



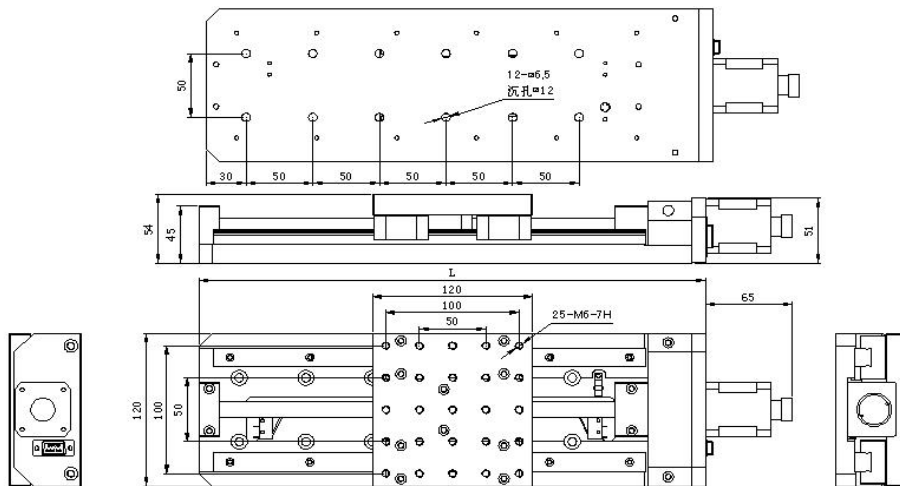
## DPY-Linear module

### Product characteristics:

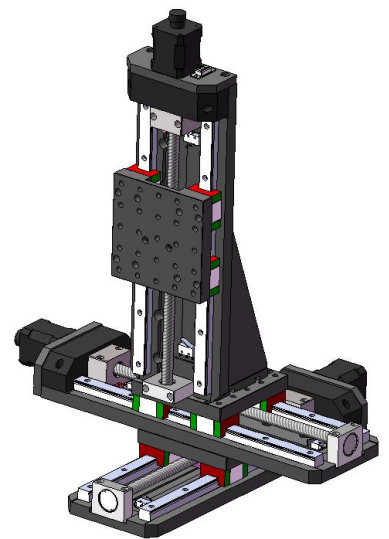
- \*Stepper motor is equipped as standard, and the motion controller can realize automatic control
- \*Precision ball screw drive, the repeated positioning accuracy and absolute positioning accuracy are kept within 5um, and the service life is long
- \*The fixed way of fine grinding guide rail greatly reduces the pitch and yaw of the electric moving table, and greatly improves the straightness and parallelism of motion
- \*The base has threaded holes and through holes with standard hole spacing, which is convenient for installation and fixation
- \*The stepping motor is directly connected with the screw, which has good depolarization performance, greatly reduces the eccentric disturbance and has low noise

### Model and parameters

产品型号	KYCT120DPY50M	KYCT120DPY100M	KYCT120DPY200M	KYCT120DPY200M	KYCT120DPY300M	KYCT120DPY400M
trip	50mm	100mm	150mm	200mm	300mm	400mm
Platform size	120X120	120X120	120X120	120X120	120X120	120X120
Screw specification	High precision ball screw (Lead4)					
guide	High precision linear slide guide (square guide)					
Stepper motor (1.80)	42Stepper motor					
Main material	Aluminum alloy / steel					
surface treatment	Anodizing blackening					
load bearing	15Kg		25Kg		35Kg	
weight	2.5Kg	3.2Kg	3.8Kg	4.5Kg	5.2Kg	6.0Kg
Maximum speed	40mm/sec					
Repetition accuracy	2U					
Absolute accuracy	5U		8U		12U	
Straightness	3U		5U		6U	
Parallelism	15U				25U	
	Replaceable servo motor (100W)					



型号	LY120DPY50M	LY120DPY100M	LY120DPY150M	LY120DPY200M	LY120DPY300M	LY120DPY400M
行程	50mm	100mm	150mm	200mm	300mm	400mm
L	230mm	280mm	330mm	380mm	480mm	580mm



# DPY-Linear module

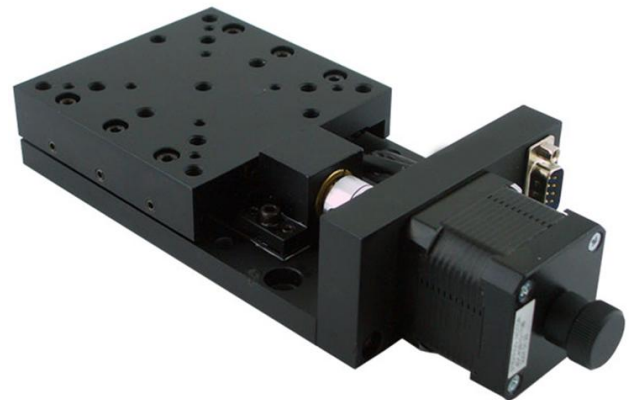
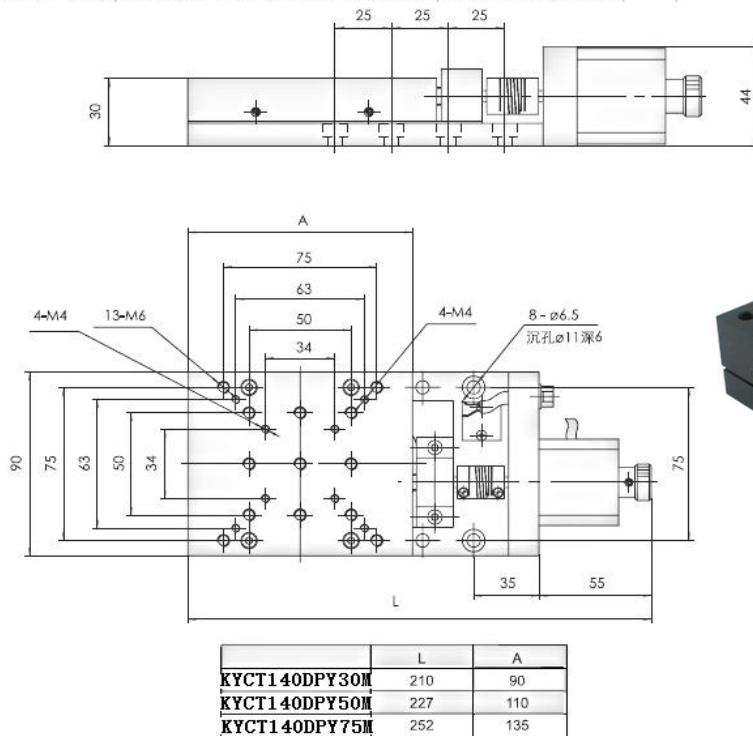
## Product characteristics:

- \*Stepper motor is equipped as standard, and the motion controller can realize automatic control
- \*Precision ball screw drive, the repeated positioning accuracy and absolute positioning accuracy are kept within 5 $\mu$ m, and the service life is long
- \*The fixed way of fine grinding guide rail greatly reduces the pitch and yaw of the electric moving table, and greatly improves the straightness and parallelism of motion
- \*The base has threaded holes and through holes with standard hole spacing, which is convenient for installation and fixation
- \*The stepping motor is directly connected with the screw, which has good depolarization performance, greatly reduces the eccentric disturbance and has low noise

## Model and parameters

Product model		KYCT140DPY30M	KYCT140DPY50M	KYCT140DPY75M
Parameter	trip	30mm	50mm	75mm
	resolving power	0.125 $\mu$ m		
	Parallelism	<5 $\mu$ m		
	pitch	10" (<50 $\mu$ rad)		
	positioning accuracy	<5 $\mu$ m		
	Straightness	<2 $\mu$ m		
	Yaw	10" (<50 $\mu$ rad)		
	top speed	5mm/sec		
	load	0-15kg		
	dead weight	1.3-3kg		
Replaceable servo motor				

Note: the above parameters are for reference only





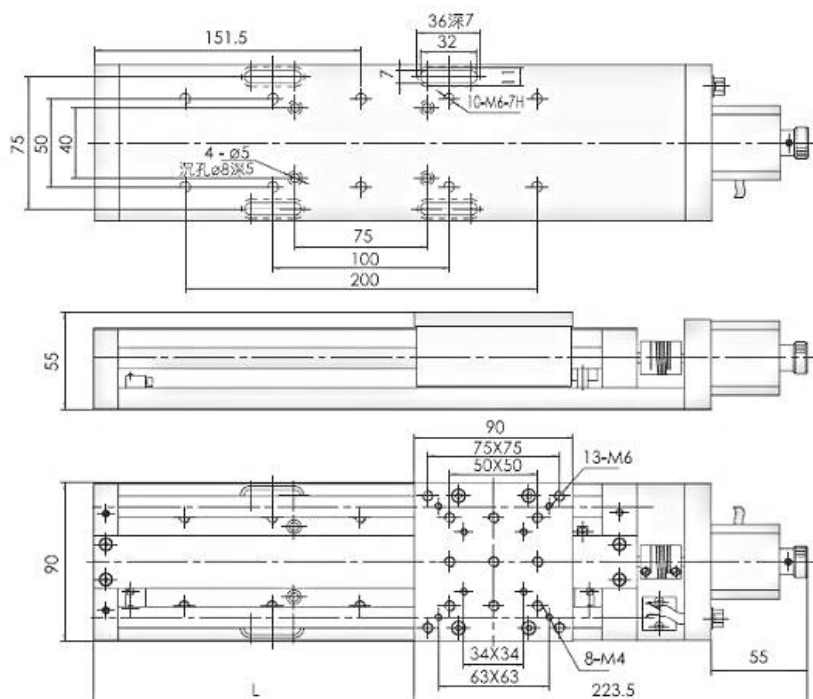
# DPY-Linear module

## Product characteristics:

- \*Stepper motor is equipped as standard, and the motion controller can realize automatic control
- \*Precision ball screw drive, the repeated positioning accuracy and absolute positioning accuracy are kept within 5um, and the service life is long
- \*The fixed way of fine grinding guide rail greatly reduces the pitch and yaw of the electric moving table, and greatly improves the straightness and parallelism of motion
- \*The base has threaded holes and through holes with standard hole spacing, which is convenient for installation and fixation
- \*The stepping motor is directly connected with the screw, which has good depolarization performance, greatly reduces the eccentric disturbance and has low noise

## Model and parameters

Product model	KYCT190DY50M	KYCT190DY100M	KYCT190DY150M	KYCT190DY200M	KYCT190DY300M	KYCT190DY400M
trip	50mm	100mm	150mm	200mm	300mm	400mm
Platform size	90×90mm			120×120mm		
Screw specification	High precision ball screw(Lead4)					
guide	High precision linear bearing guide					
Stepper motor(1.80)	42Stepper motor					
Main material	Aluminum alloy / steel					
surface treatment	Anodizing blackening					
load bearing	0-20Kg					
weight	3.5Kg	4.2Kg	4.8Kg	5.5Kg	6.5Kg	7.5Kg
Maximum speed	40mm/sec					
Repetition accuracy	5U					
Absolute accuracy	5U		8U		12U	
Straightness	3U		5U		6U	
Parallelism	15U			25U		
	Replaceable servo motor					



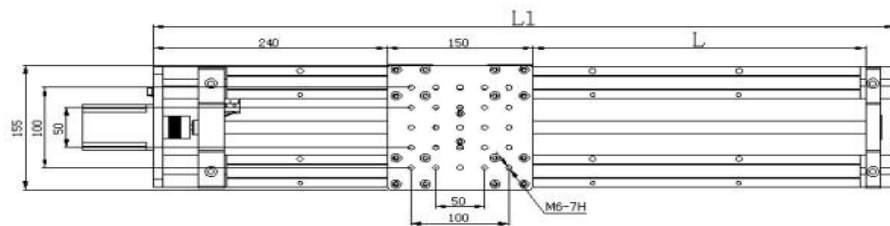
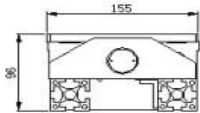
# DPY-Linear module

## Product characteristics:

- \*Stepper motor is equipped as standard, and the motion controller can realize automatic control
- \*Precision ball screw drive, the repeated positioning accuracy and absolute positioning accuracy are kept within 5um, and the service life is long
- \*The fixed way of fine grinding guide rail greatly reduces the pitch and yaw of the electric moving table, and greatly improves the straightness and parallelism of motion
- \*The base has threaded holes and through holes with standard hole spacing, which is convenient for installation and fixation
- \*The stepping motor is directly connected with the screw, which has good depolarization performance, greatly reduces the eccentric disturbance and has low noise

## Model and parameters

Product model	KYCT160DPY300M	KYCT160DPY400M	KYCT160DPY500M	KYCT160DPY1000M	KYCT160DPY1500M	KYCT160DPY2000M	
P a r a m e t e r	Platform size		150×150mm				
	trip	300mm	400mm	500mm	1000mm	1500mm	2000mm
	Main material	Aluminum alloy					
	surface treatment	Anodizing blackening					
	load bearing	50KG					
	Screw specification	High precision ball screw(Lead5mm)					
	guide	Support type precision linear bearing guide rail					
	Stepper motor(1.80)	57Stepper motor					
	weight	3.8kg-7.2kg					
	Parallelism	10μ-20μ					
	Maximum speed	40mm/sec-50mm/sec					
	Repetition accuracy	20 μ					
	Absolute accuracy	30 μ					
	Straightness	10μ-60μ					
Replaceable servo motor (200W)							



型号	LY160DPY-300	LY160DPY-400	LY160DPY-500	LY160DPY-1000	LY160DPY-1500	LY160DPY-2000
L	561	661	761	1261	1761	2261
L1	136	236	336	836	1336	1836

